

# AGUA

PERFORMANCE UPHOLSTERY FABRICS

## Nova Collection

A soft microfibre fabric  
for indoor upholstery

# Nova

Designed for use in demanding environments, this is a high performance fabric that provides comfort and luxury

### Perfect for:

Commercial, cruise, hospitality, leisure and senior living

### Fabric Specifications

Flame retardant	BS7176 Crib 5, BS EN 1021-1:2006 1&2, BS5852 Crib 5, IMO Annex 1 Part 8
Anti-bacterial/Anti-fungal	Resistant to microbial or fungal growth including Salmonella, E Coli and MRSA
Waterproof	Hydrostatic Head BS3424 > 1 metre
Martindale	Severe Contract > 100,000
Composition	100% Treated Polyester. 145cm (57") wide
Breathable	Moisture vapour permeable
Stain resistant	Excellent stain removal has been observed for grease, ink, blood, urine, coffee, iodine, betadine, ketchup, chewing gum, chocolate, grape juice

### Technical Information

We recommend a minimum of 32 stitches per 10 cm (8 stitches per inch) and seams must have a minimum 12mm (0.5") bite on the fabric.

Not suitable for use as removable loose covers.

Please note that all fabric offered is subject to minor tolerance in respect of shade and other slight variations.

Technical specifications may be amended, please check for the latest information.

Please ask if you require a sample of the current batch available but be aware that stock can move quickly.

Nova can be colour co-ordinated with Agua faux leather collections to produce stunning furniture with dual textured finishes.

Bespoke colours can be produced subject to minimum quantity orders

### Fabric Care

Use a vacuum cleaner or soft brush to remove dust and solid particles.

Always try cleaning products on a hidden piece of fabric to test suitability.

Wipe frequently with a damp cloth to maintain the appearance of the fabric.

All spillages should be removed immediately with a clean absorbent cloth.

Most stains can be removed using cold/warm water and a clean microfibre cloth, however poorly fixed clothing dyes may cause permanent staining.

Stains from products containing oil and grease should be treated with a spirit based solution.

Can be cleaned with mild Hypochlorite solutions (up to 10,000 ppm of available chlorine - including Haz Tabs and Chlor-Clean) or Mineral Spirit for infection control purposes.

Can be steam cleaned in situ.

Do not machine wash or dry clean.

Remove all stains immediately before they set.

If soap based cleaners are used, all soap residues must be rinsed from the fabric.

Please refer to the Care Sheet on the Agua website for further details.

Do not use solvents, chemical agents, waxes or polishes as this will damage the surface of the fabric

### Samples and enquiries

You can contact us for samples, order enquiries or information about any of our fabric ranges here:

Agua Fabrics Ltd,  
Hyde House,  
The Hyde, London NW9 6LH  
T +44 (0)20 8205 0050  
T +44 (0)20 8205 0660  
E [info@aguafabrics.com](mailto:info@aguafabrics.com)  
[www.aguafabrics.com](http://www.aguafabrics.com)



Certificate No. FS531220

# AGUA

PERFORMANCE UPHOLSTERY FABRICS

Nova Collection | v. 4.6



Anti-Microbial



Bleach Cleanable



Fire Retardant Crib 5/IMO



Stain Resistant



Waterproof



Martindale Abrasion Severe Contract



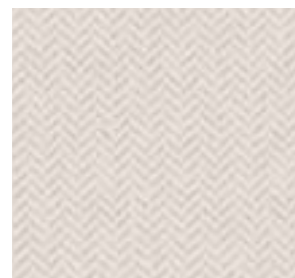
Phthalate Free



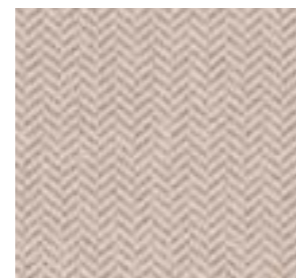
REACH Compliant



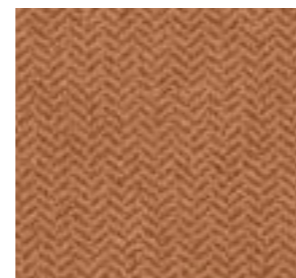
Nova Sea Grass



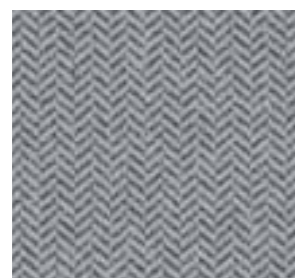
Nova Vanilla



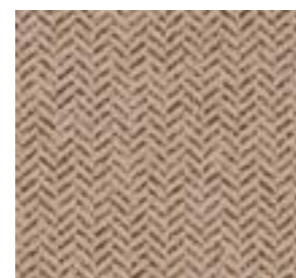
Nova Oatmeal



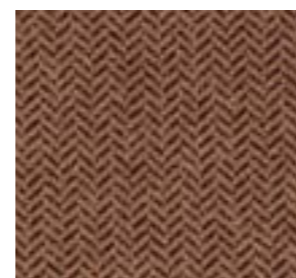
Nova Mink



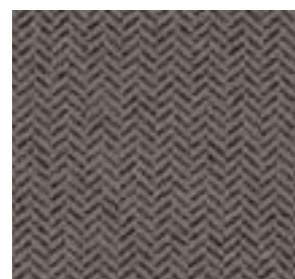
Nova Dove



Nova Latte



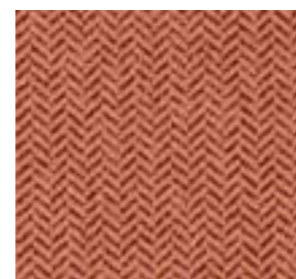
Nova Walnut



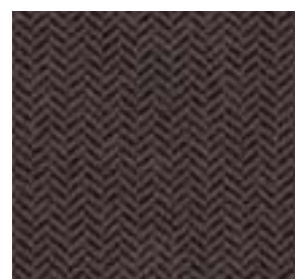
Nova Raven



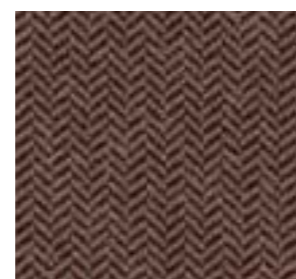
Nova Taupe



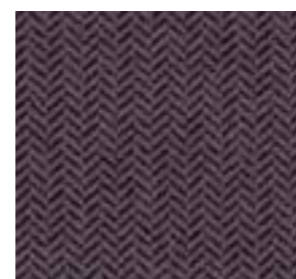
Nova Chestnut



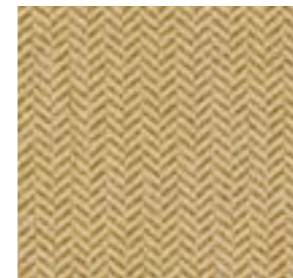
Nova Ebony



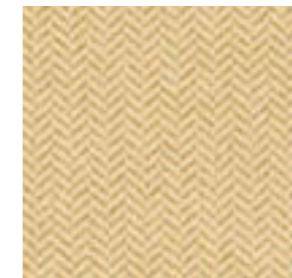
Nova Nutmeg



Nova Grape



Nova Dill



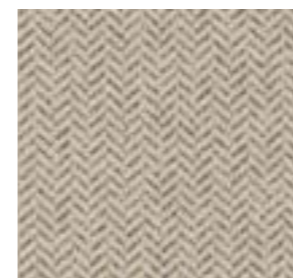
Nova Lemon



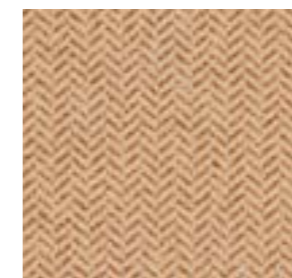
Nova Lavender



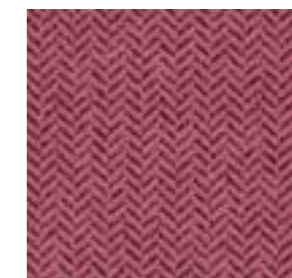
Nova Wedgwood



Nova Fennel



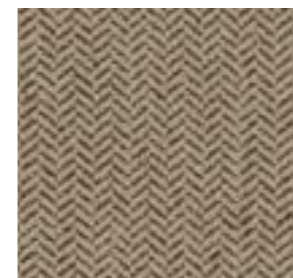
Nova Saffron



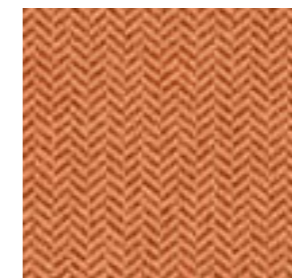
Nova Burgundy



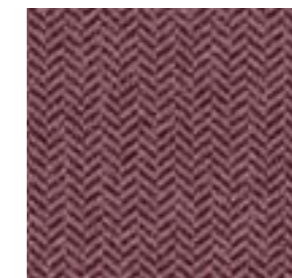
Nova Orion



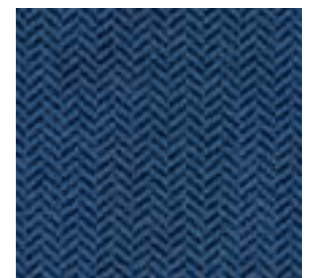
Nova Sage



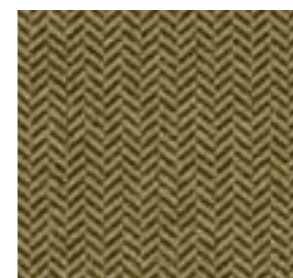
Nova Burnt Orange



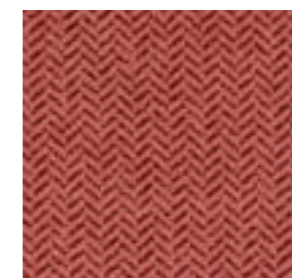
Nova Damson



Nova Bluebell



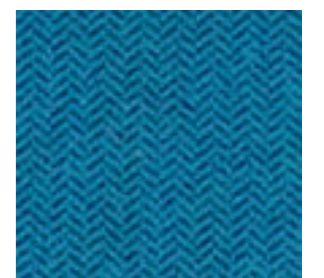
Nova Moss



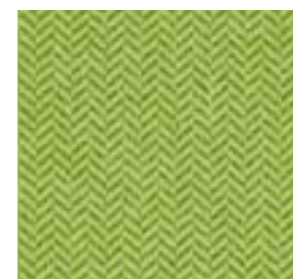
Nova Russet



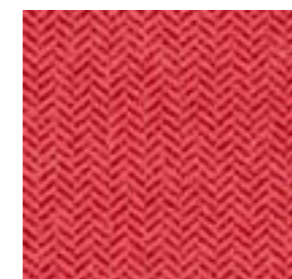
Nova Claret



Nova Royal



Nova Lime



Nova Poppy



Nova Raspberry



Nova Walnut